

worship. arts. camp.

**July 14-18, 2025 | Ouachita Baptist University**  
**For students grades 7-12 completed**

**PraiseWorks** is an amazing opportunity for students to gather to experience worship, to learn about worship, and to gain skills for leading and participating in worship. Our goal is to equip students with hands-on experiences and to give them a place to discover and develop their passion and their God-given abilities. **Every student** who attends PraiseWorks will:

- Participate in **amazing worship** services daily
- Participate in **two tracks** (see list inside)
- Participate in either a mass **choir** or play in the student **orchestra**

PraiseWorks is for students who have completed 7th-12th grade. If 6th grade students are included in your student ministry, those who have completed 6th grade may participate in either PraiseWorks or JoyWorks.

**Registration opens March 1, 2025, at**  
**praiseworksarkansas.com**

**Arkansas**  
BAPTISTS

10 Remington Drive, Little Rock, AR 72204

**praiseworks**

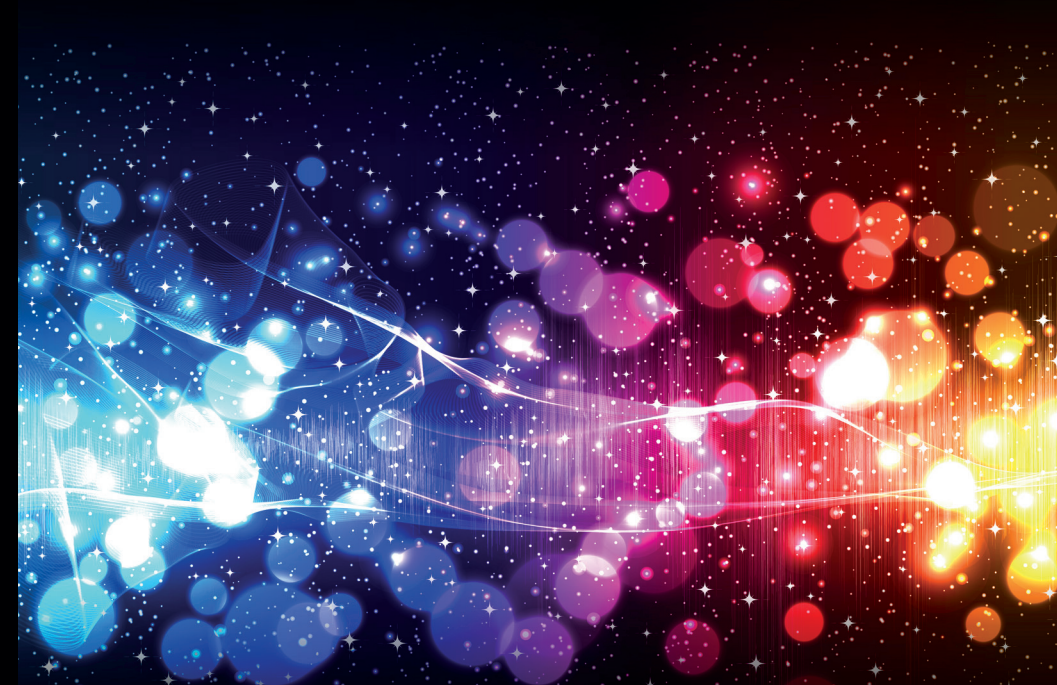
**July 14-18, 2025**

**Registration opens**

**March 1, 2025**

**praiseworksarkansas.com**

NON-PROFIT ORG  
US POSTAGE  
PAID  
LITTLE ROCK, AR  
PERMIT # 1615



praise. amazed.

**praiseworks**

Everyone was  
amazed and gave  
praise to God.

Luke 5:26



# tracks.

See descriptions online at [praiseworksarkansas.com](https://praiseworksarkansas.com)

- Ableton (and other cool tools)
- Art
- Communicating the Gospel
- Creative Song Writing
- Deeper
- Drama
- Drums (beginner and advanced)
- Evening Worship Choir (2nd Track only)
- Graphic Design
- Bass Guitar (beginner, intermediate, advanced)
- Acoustic Guitar (beginner, intermediate, and advanced)
- Electric Guitar (beginner, intermediate, and advanced)
- Interpretive Movement/Dance
- Keyboard/Piano (beginner, intermediate, and advanced)
- Leading Worship with the Band (for guitars, keys, and drums)
- Leading Worship with the Vocal Team
- Media Software (ProPresenter)
- Mobileography (using camera capable smart devices)
- Orchestra in Praise Band
- Photography (camera required)
- Planning Impactful Worship
- Sign Language
- Steel Drums (beginner and intermediate)

- Stomp
- Synthesizer Keyboard
- Tech, Sound, Lighting (beginner, intermediate, and advanced)
- Vocal Coaching for Guys
- Vocal Coaching for Girls
- Worship Band Music Theory

## Auditioned Tracks

[Must sign up on registration and provide video to audition]

- Morning Celebration Band
- Morning Celebration Praise Team

## Explore Your Call

Think you might be called to ministry? Check out this optional offering Thursday at lunch—no sign-up required.

# facts.

## Camp Pastor

Bill Newton, NextGen and Discipleship Strategist, Arkansas Baptist State Convention

## Camp Varsity Choir Director (grades 9-12)

Rhon Carter, Worship and Music Strategist, Georgia Baptist Mission Board

## Camp Junior Varsity Choir Director (Grades 6-8)

Dr. Trent Broussard, Chair, Department of Fine Arts/Choral Activities, Williams Baptist University

## Camp Orchestra Director

Tim Gunter, Orchestra Director, Geyer Springs First Baptist Church, Little Rock, Arkansas

- Registration is available beginning March 1, 2025, at [praiseworksarkansas.com](https://praiseworksarkansas.com)
- No registration is guaranteed without paid fees and completed online registration.
- Most tracks have limitations on the number of students who can participate. Sign up for tracks is on a first-come, first-served basis. Once the tracks are full, no other students can be added.
- No track changes can be made after **June 30**.
- All registrants must preregister for tracks, indicating their voice part (for choir) or instrument played (for orchestra), track choices, and T-shirt size.
- Orchestra players must have at least two years of band/orchestra experience or private lessons, otherwise the student must choose choir. All students who plan to play in the orchestra must audition for chair placement on the first day of camp, Monday afternoon.
- Every student will participate in either orchestra or choir.
- Health forms will be completed during registration. Every student and adult will complete this information as they register for camp.

## Cost

- Registration March 1–May 31 = \$280  
Late Registration June 1–30 = \$300
- Cancellation financial policy: 100% refund if cancelled by May 31; 50% refund if cancelled between June 1–30; no refund after June 30.

## Auditions

- **Morning Celebration Band and Vocal Auditions**—Students who wish to audition for the Morning Celebration team must submit their audition online at [praiseworksauditions.com](https://praiseworksauditions.com) no later than June 30. Instructions on how to submit videos will be on that website as well as other guidelines. No new auditions will be allowed on Monday at camp.
- **Talent Show Auditions**—Students who desire to audition for the talent show must submit their audition online at [praiseworksauditions.com](https://praiseworksauditions.com) no later than June 30. Students can create the video on a smartphone. Instructions on how to submit videos will be on that website as well as other guidelines. No new auditions will be allowed on Monday at camp.

## Sponsors

Each church must provide sponsors at a ratio of one sponsor for every 10 female students and one sponsor for every 10 male students. A sponsor must have completed at least one year of college. Sponsors are *encouraged* to audit tracks, but please do not sign up for the track due to the limited spots available for students.

While it is the responsibility of each church to provide sponsors, you may contact another PraiseWorks participating church to see if they will agree to sponsor your student. If you need help with suggestions of a church who might include your student, contact the ABSC office.

**For more information or assistance**, contact: [lgunter@absc.org](mailto:lgunter@absc.org), call 501-376-4791 or 1-800-838-2272, ext 5132, or go to [praiseworksarkansas.com](https://praiseworksarkansas.com)



A Cooperative Program ministry of the Evangelism + Church Health Team